

Dulux®

Known
For Excellence

Powder Coat
Colour Selector
& Specifications

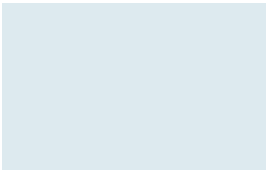
Duratec™
Electro™
Fluoroseal®

52
Expansive
Colours

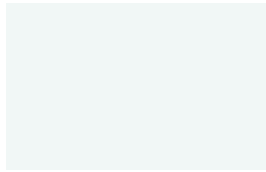
Dulux® has a long history of providing extremely durable powder coating finishes for monumental commercial construction projects across Asia, Australia, New Zealand and the Middle East. Our range of premium products are formulated to provide outstanding durability performance in the harshest environments.



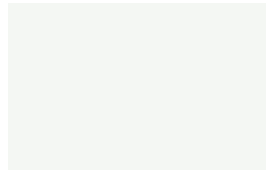
DURATEC®



Arctic White
90058851 Satin
R224 G232 B237 – LRV 82%



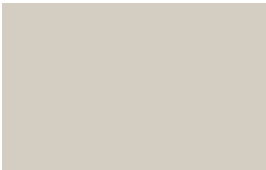
Zeus® White
9001110G Gloss
R241 G245 B243 – LRV 91%



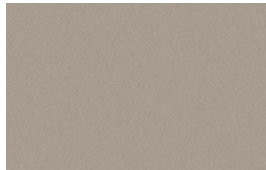
Appliance White
90058853 Satin
R243 G244 B240 – LRV 91%



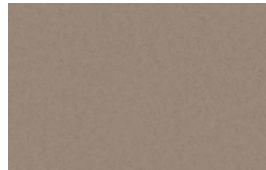
Eternity® Linen Pearl
9001138Q Satin
R226 G222 B212 – LRV 76%



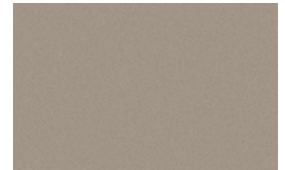
Matt Canvas Cloth
9007327M Matt
R208 G204 B192 – LRV 64%



Eternity® Nickel Pearl
90088395 Matt
R163 G155 B142 – LRV 38%



Copper Metallic Kinetic®
9007183K Matt
R146 G134 B123 – LRV 29%



Matt Champagne Kinetic®
9003059K Matt
R156 G147 B133 – LRV 34%



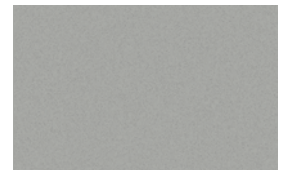
Zeus® Lunar Grey
90088417 Matt
R198 G201 B196 – LRV 61%



Zeus® Silver Grey
90051272 Matt
R171 G175 B177 – LRV 47%



Eternity® Citi Silver Pearl
9007024Q Matt
R167 G172 B175 – LRV 45%



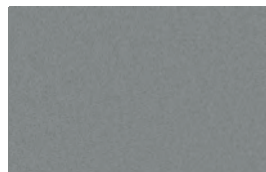
Eternity® Chain Pearl
90089119 Matt
R165 G166 B163 – LRV 42%



Eternity® Star Pearl
9007005F Flat
R153 G157 B158 – LRV 38%



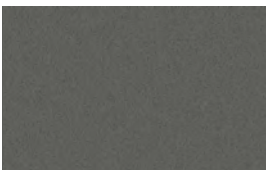
Eternity® Silver Kinetic®
9007160K Satin
R147 G150 B152 – LRV 35%



Eternity® Pewter Pearl
90088396 Satin
R128 G132 B132 – LRV 27%



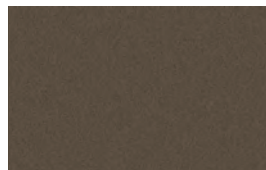
Zeus® Grey
90088416 Satin
R109 G112 B115 – LRV 20%



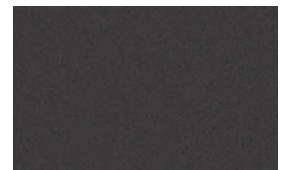
Eternity® Titanium Pearl
90087728 Satin
R91 G92 B88 – LRV 14%



Zeus® Timberland
9007315S Satin
R84 G 84 B 80 – LRV 12%



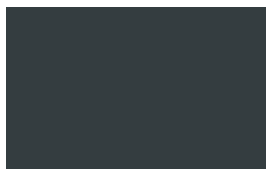
Eternity® Bronze Pearl
90088393 Satin
R82 G74 B62 – LRV 10%



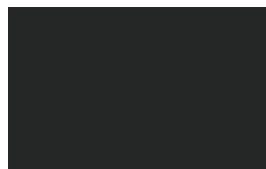
Eternity® Charcoal Pearl
90088394 Satin
R55 G54 B54 – LRV 6%



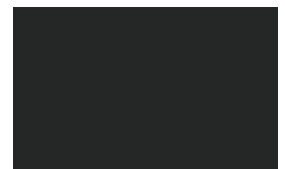
Zeus® Charcoal
90087732 Satin
R60 G64 B68 – LRV 8%



Zeus® Dark Grey
90051275 Matt
R58 G64 B67 – LRV 8%



Zeus® Black
90088702 Matt
R43 G44 B44 – LRV 4%



Zeus® Lunar Eclipse
90087734 Satin
R43 G44 B44 – LRV 4%



For many years, the most widely specified super durable coating on high rise commercial projects throughout Australia and New Zealand.

Our advanced polyester resin technology, combined with high performance pigments, exceed the internationally recognised performance standard AAMA 2604-10, delivering excellent gloss and colour retention when compared to standard polyester powder coatings.

- High rise commercial projects
- Major commercial and residential developments, irrespective of the building height and in most environments
- Developments further than 10 metres from salt water
- Achieves AAMA 2604-10 performance standard
- Supported by a 20 year durability warranty* when applied by a Dulux® Registered Applicator

DURATEC®
INTENSITY®

Dulux®
Duratec® Intensity®
10 Comprehensive Colours



Intensity® Moonlight
9002004S Satin
R239 G208 B65 – LRV 67%



Intensity® Leaf
9006167S Satin
R74 G138 B64 – LRV 24%



Intensity® Sunshine
9002084G Gloss
R233 G174 B53 – LRV 52%



Intensity® Evergreen
9006005S Satin
R39 G96 B62 – LRV 12%



Intensity® Summer
9004008G Gloss
R229 G87 B31 – LRV 27%



Intensity® Coast
9005233S Satin
R16 G93 B134 – LRV 13%



Intensity® Desert
9004227S Satin
R138 G56 B46 – LRV 11%



Intensity® Reef
9005011G Gloss
R40 G108 B181 – LRV 18%



Intensity® Flame
9004007G Gloss
R181 G44 B39 – LRV 14%



Intensity® Storm
90089584 Satin
R42 G51 B80 – LRV 6%

**KNOWN FOR EXCELLENCE
COMMERCIAL COLOUR COLLECTION**

ELECTRO™

Dulux® Electro™ 12 Comprehensive Colours



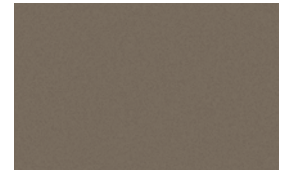
Flat White
9061200F
R240 G242 B240 – LRV 90%



Shimmering Champagne
9063116K
R138 G128 B115 – LRV 27%



Natural Silver
9067365K
R165 G168 B167 – LRV 43%



Scintillation
9068186K
R114 G105 B93 – LRV 19%



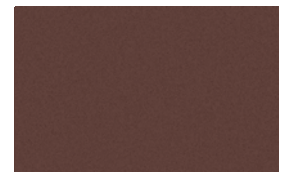
Vintage Silver
9067377K
R125 G126 B128 – LRV 25%



Golden Touch
9068182K
R136 G119 B93 – LRV 24%



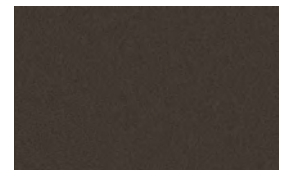
Subtle Blue
9065177K
R173 G192 B202 – LRV 55%



Burnished Copper
9068185K
R85 G62 B57 – LRV 9%



Blue Suede Shoes
9065178K
R104 G118 B125 – LRV 22%



Dark Bronze
9068184K
R59 G53 B47 – LRV 6%



Green Tea
9066197K
R97 G106 B102 – LRV 18%



Black Ace
9069116F
R44 G44 B45 – LRV 4%



With an anodised look, Electro™ is cleverly designed to subtly change in appearance as light conditions alter throughout the day.

With our advanced polyester resin technology, Electro™ is supported by a 20 year durability warranty*, exceeding the performance requirements set out in the internationally recognised AAMA 2604-10 standard.

- High rise commercial projects
- Commercial & residential developments irrespective of the building height and in most environments
- Developments further than 10 metres from salt water
- Achieves AAMA 2604-10 performance standard
- Supported by a 20 year durability warranty* when applied by a Dulux® Registered Applicator

Fluoraset®
Xtreme™

Dulux®

6
Comprehensive
Colours

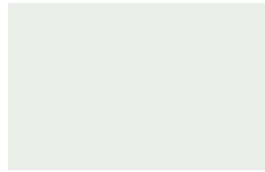


Fluoraset® is formulated for extremely harsh environments where the highest level of durability is required.

It is supported by a 30 year durability warranty* giving you confidence that your coating will stand the test of time.

- Projects where product performance is under constant review
- All commercial and residential projects, irrespective of height
- When class leading colour and gloss retention is desired
- Developments further than 10 metres from salt water
- Exceeds AAMA 2605-11 performance standard
- Supported by a 30 year durability warranty* when applied by a Dulux® Registered Applicator

FLUOROSET®



Xtreme™ White
9641157M Satin
R235 G236 B231 – LRV 85%



Xtreme™ Coin
9647289S Satin
R165 G170 B173 – LRV 44%



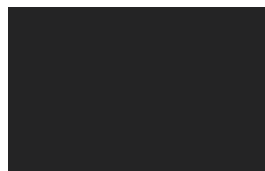
Xtreme™ Champagne
9647302Q Satin
R160 G158 B153 – LRV 39%



Xtreme™ Silver
9647273Q Satin
R148 G152 B154 – LRV 36%



Xtreme™ Charcoal
9647297M Satin
R59 G62 B66 – LRV 7%



Xtreme™ Black
96456970 Satin
R42 G42 B43 – LRV 4%

1

SPECIFY

A

PRODUCT

Specification of powder coating finishes on architectural aluminium and other metal substrates can be a complex process and the following items should be considered;

- What is the most appropriate product for your project?
- Does the product offer a genuine durability warranty?
- What assurance is there that the coating is applied correctly?
- How do you ensure that your specification is not misinterpreted?

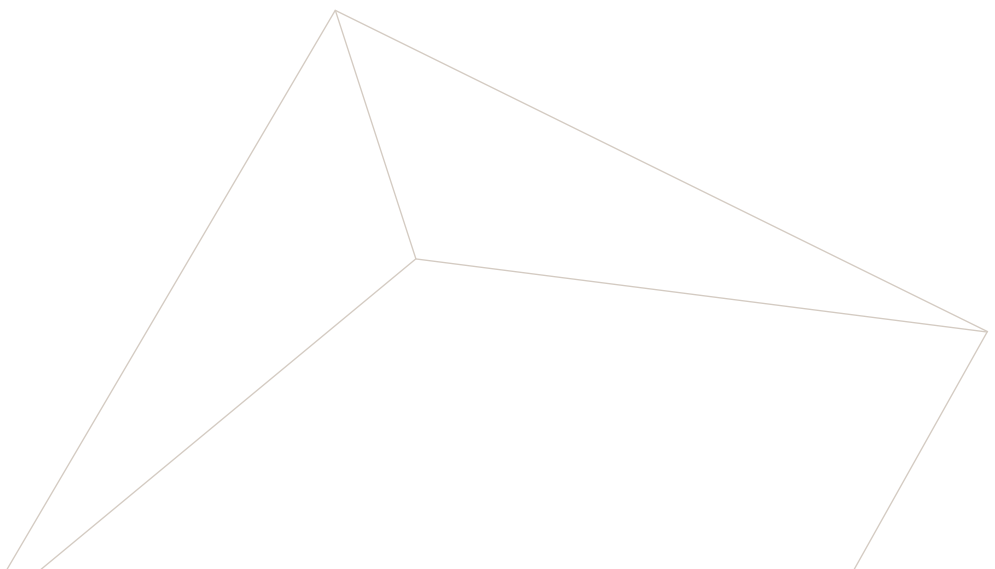
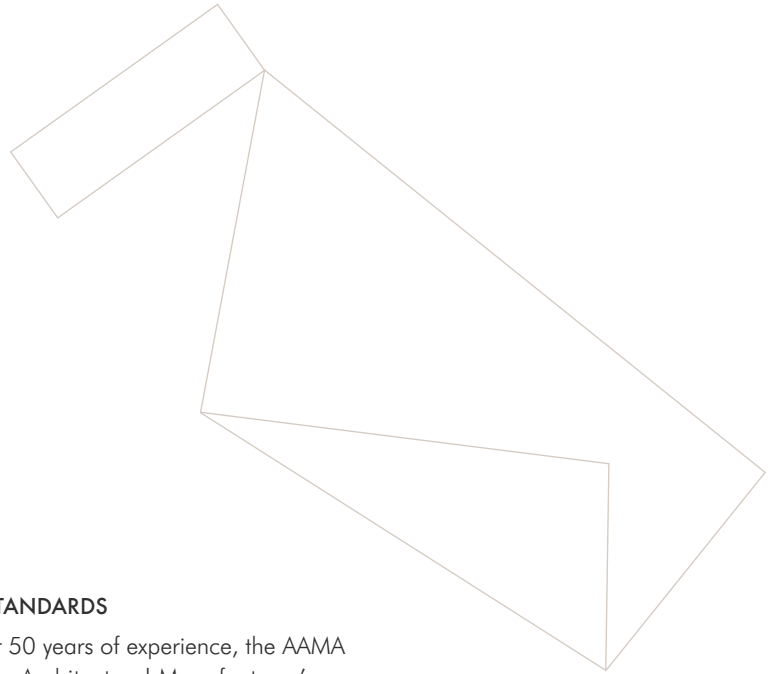
AAMA STANDARDS

With over 50 years of experience, the AAMA (American Architectural Manufacturer's Association) is regarded as the standards leader for finishes on architectural aluminium. The AAMA objective is to develop and improve quality standards, encourage research & development and set benchmarks for product performance of architectural products.

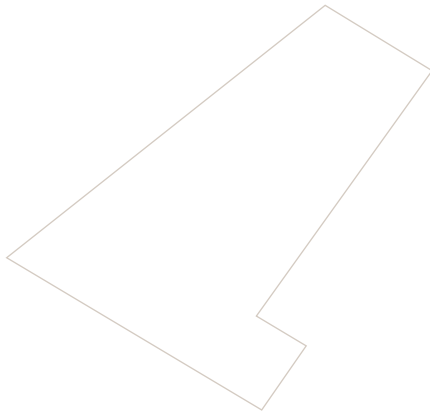
For finishing of commercial architectural aluminium, Dulux® recommend two internationally recognised AAMA standards, AAMA 2604 and AAMA 2605. Specifying powder coatings that comply with one of the below AAMA standards removes all doubt for the fabricator and applicator. The Dulux® powder coating products that meet or exceed these standards are shown below.

	Duratec®	Electro™	Fluorosef®
AAMA 2605-11	No	No	Yes
AAMA 2604-10	Yes	Yes	Yes
AAMA 2603-05	Yes	Yes	Yes
Coating Type	Super Durable Polyester	Super Durable Polyester	Ultra Durable Fluoropolymer
Durability Warranty*	20 years	20 years	30 years

*Subject to terms and conditions of the relevant product warranty. Please contact your local Dulux representative for further details.



PROJECT REQUIREMENTS



- Residential properties are typically easy to maintain, given their height and access.
- High-rise projects are less sheltered from neighbouring buildings, raising their exposure and reducing their ease of maintenance.
- Monumental projects attract the most attention and have the highest standards required to uphold the reputation expected from landmark sites.

SPECIFICATION CHECKLIST

- ✓ The most appropriate AAMA specification
- ✓ Environmental aspect and project type
- ✓ Product features, including performance and colour range
- ✓ Design and installation considerations
- ✓ Warranty terms and conditions
- ✓ Ensure the specification of the chosen finish is clearly in line with the above points

To ensure there is no misinterpretation of what you want on your project:

- ✓ Specify the Dulux® “Product Name and Code” to meet
- ✓ The required AAMA standard
- ✓ To be applied by a Dulux® Registered Applicator
- ✓ Specify the durability warranty period

For example

“Fluoraset® Xtreme™ Coin Satin
964-7289S to meet AAMA 2605-11.

Product must be applied by a Dulux® Registered Applicator and must offer a 30 year durability warranty.”

Project Type	Environment	Duratec®	Electro™	Fluoraset®
Monumental	Mild, Tropical or Severe			○
Prestigious Commercial Development	Severe			○
Prestigious Commercial Development	Mild or Tropical	○	○	○
Commercial Development (>3 levels)	Severe	○	○	○
Commercial Development (>3 levels)	Mild or Tropical	○	○	○
Commercial Development (<4 levels)	Mild, Tropical or Severe	○	○	○
Residential (>3 levels)	Severe	○	○	○
Residential (>3 levels)	Mild or Tropical	○	○	○

OFFICES

Australia

Dulux Powder
& Industrial Coatings
1 – 15 Pound Road West
Dandenong South VIC 3175
T. (61) 3 8787 4500
F. (61) 3 8787 4542
Customer Service
T. 13 24 99
F. 1800 804 649

New Zealand

Dulux Powder
& Industrial Coatings
31B Hillside Road
Glenfield, Auckland
New Zealand
T. (649) 441 8244
F. (649) 441 8242
Customer Service
T. 0800 800 975
F. 0800 476 9337

Singapore

DGL International Powder
& Industrial Coatings
Blk 265
#02-275
Serangoon Central Drive
Singapore 550265
T. (65) 6838 1010
F. (65) 6733 5125

ADVICE LINE

Our dedicated consultants can help simplify the specification process, saving you time and money by providing the right coating advice for your project.



Call 13 24 99 or visit
www.duluxpowders.com.au



Dulux, Fluoraset, Duratec, Eternity, Intensity and Kinetic are registered trademarks and Electro and Xtreme are trademarks of DuluxGroup (Australia) Pty Ltd. Zeus is a registered trademark in Australia and a trademark in New Zealand of DuluxGroup (Australia) Pty Ltd. Any advice, recommendation, information, assistance or service provided by DuluxGroup (Australia) Pty Ltd in relation to goods manufactured by it or use and application is given in good faith and is believed by DuluxGroup (Australia) Pty Ltd to be appropriate and reliable. However, any advice, recommendation, information, assistance or service provided by DuluxGroup (Australia) Pty Ltd is provided without liability or responsibility PROVIDED THAT the foregoing shall not exclude, limit, restrict or modify the rights entitlements and remedies conferred upon any reason, or liabilities imposed by DuluxGroup (Australia) Pty Ltd by any condition or warranty imposed by a Commonwealth, State or Territory Act or ordinance rendering void or prohibiting such exclusion, limitation, restriction or modification. The information in this brochure is true and correct at the time of print. Colours shown are as close as possible to actual powder colours. Please note, due to limitations of the printing process, photographic and printed images may not represent the true colour. Always confirm your colour choice with Dulux Powder & Industrial Coatings Sample Clips.